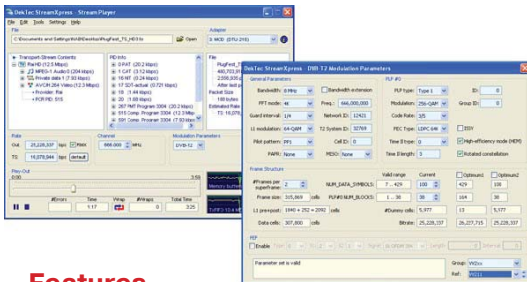


## DTC-300 StreamXpress® Transport-Stream/SDI Payout Software



Industry-standard player  
Selective error injection  
Integrated (P)SI viewer, looping

### Features

- ✓ Integrate yourself a low-cost, high-performance stream player using a standard- or industrial PC, a DekTec output adapter and the StreamXpress® payout software.
- ✓ Integrated (P)SI viewer
- ✓ Control of modulation parameters
- ✓ Optional channel modeling of RF output signal
- ✓ Integrated ISDB-T hierarchical multiplexer
- ✓ Supports DTA-Plus RF attenuator
- ✓ Play-out at a higher rate by null-packet stuffing with PCR correction
- ✓ Endless play with optional automatic correction of continuity-counter and PCR/PTS/DTS fields
- ✓ Automatic computation of transport rate
- ✓ Reproducible injection of errors in the transport stream with adjustable error rate
- ✓ SOAP-based remote control option

### Applications

- ✓ Universal MPEG-2 stream generator for feeding set-top boxes, digital-video processing equipment, etc.
- ✓ Demoiing your MPEG-2 equipment
- ✓ Laboratory MPEG-2 test-signal generator

### Supported Output Adapters

Signal Type	Supported Adapters
DVB-ASI	DTA-105, 112, 115, 145, 160, 2136, 2137C, 2142, 2144, 2145, 2154, 2160 DTE-3100 DTU-205, 245
DVB-SPI	DTA-102, 2142
HD-SDI	DTA-2152, 2154
3G-SDI	DTA-2154
Modulators	DTA-107, 110, 111, 112, 115, 116, 117, 2107, 2111, 2115 DTU-215
TSolP	DTA-160, 2160, 2162

### PC Requirements

Platform	Windows XP/2k3/Vista/2k8/7/8
Processor*	PIII (ASI) .. Core 2/Core i7 (DVB-T2)

\* Or equivalent AMD processor

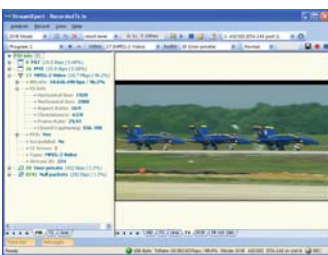
### Related Products

Type	Description
DTA-Plus	VHF/UHF attenuator; Can be controlled from StreamXpress®
DTC-320-SX	StreamXpert® TS analyser software
DTC-335-SY	SdEye SDI analysis software

### Ordering Information

Type	Description
DTC-300-SP	StreamXpress® payout software
DTC-302-RC	Remote control option
DTC-305-CM	XpressSim channel-modelling option for modulators

## DTC-320 StreamXpert® v2 Transport-Stream Analyser Software



### Features

- ✓ Real-time analysis, monitoring and recording of MPEG-2 transport streams
- ✓ Provides detailed statistics on PIDs, services and tables found in the transport stream
- ✓ Deep decoding of PSI, DVB-SI, DVB-RCS and ATSC-PSIP tables and descriptors
- ✓ User-definable TR 101 290 templates

- ✓ Integrated SD/HD video and audio decoder with support for MP2 / H.264 video and MP1 / MP2 / (HE) AAC / AC3 audio
- ✓ Analysis of TS-over-IP streams via a DTA-160, DTA-2160, DTA-2162 or a local network adapter
- ✓ The world's most cost-effective and user-friendly MPEG-2 transport-stream analyser

### Applications

- ✓ Test and validation of equipment with transport-stream output, e.g. multiplexers
- ✓ Quality monitoring of MPEG-2 transport streams in studios, head ends, etc.

### Supported Input Adapters

Signal Type	Supported Adapters
DVB-ASI	DTA-112, 115, 116, 117, 124, 145, 160, 2142, 2144, 2145, 2154, 2160 DTE-3120, DTU-225, 245
DVB-SPI	DTA-122, 2142
Receivers	DTA-2131, 2136, 2137C, 2138, 2139 DTU-236A, DTE-3137
TSolP	DTA-160, 2160, 2162, PC NIC

### PC Requirements

Platform	Windows XP/2k3/Vista/2k8/7/8
Processor*	Core i5 (HD-AVC decoding)

\* Or equivalent AMD processor

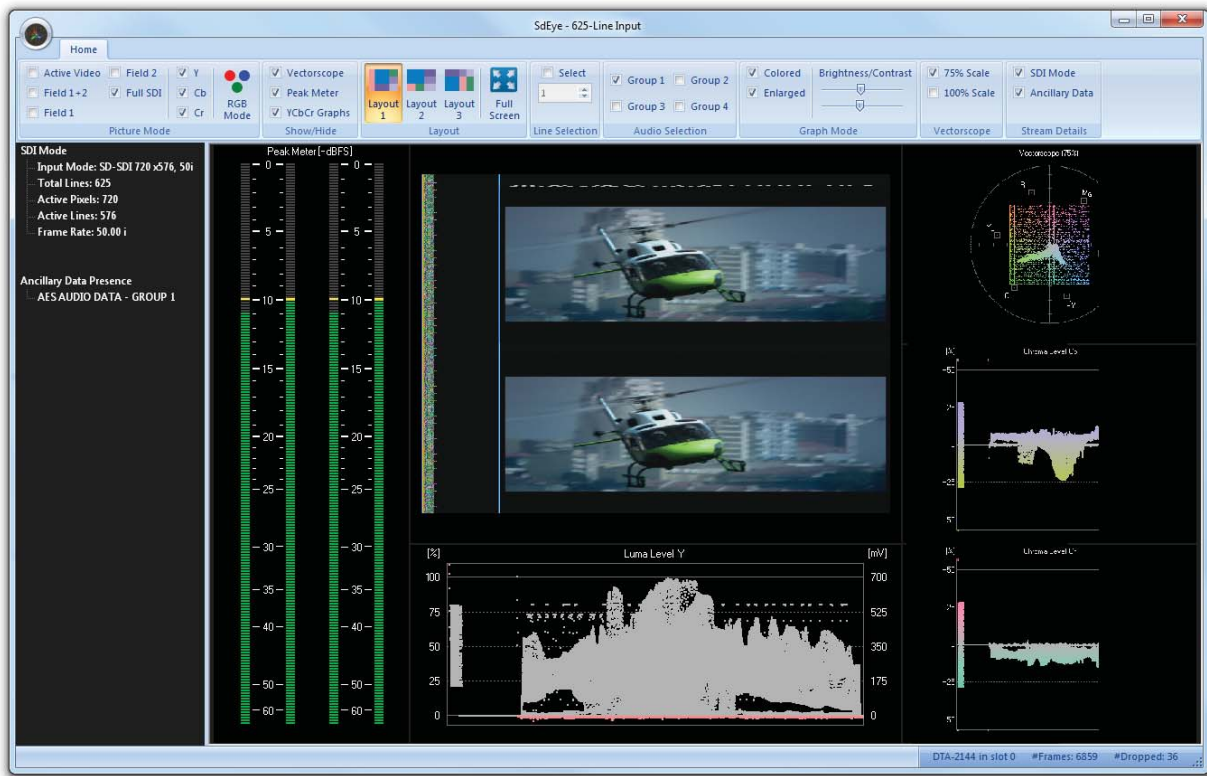
### Related Products

Type	Description
DTC-335-SY	SdEye SDI analysis software
DTC-345-DVB+	DVBAnalyzer advanced analysis

### Ordering Information

Type	Description
DTC-320-SX	StreamXpert® TS analyser
DTC-320-DGL	StreamXpert® for PC NIC (dongle)
DTC-390-VC1	VC1 decoder option

## DTC-335 SdEye Real-Time SDI Waveform Monitor



### General Features

- ✓ Real-time waveform analyser for SD- and HD-SDI signals
- ✓ Contemporary GUI with quick access buttons
- ✓ User-selectable window layout
- ✓ Full-screen mode

### Picture Display

- ✓ Top, bottom, interlaced, full frame
- ✓ Separate Y, Cb, Cr or RGB channel display

### Waveforms

- ✓ Y,Cb,Cr or RGB graphs
- ✓ Vectorscope
- ✓ Single line selection

### Audio

- ✓ Audio decoding/display
- ✓ Peak meter (up to 16-channel display)
- ✓ Stereoscope

### Picture Display

- ✓ List of all ancillary data streams
- ✓ Display of SDI data words with user selectable row and column
- ✓ Hex or decimal, 8 or 10-bit display

### Key Attributes

Parameter	Value
Input Signal	SMPTE 259M/C SMPTE-292M

### PC Requirements

Platform	Windows XP/2k3/Vista/2k8/7/8
Processor*	P4@3.0Ghz Core 2, Core i7

\* Or equivalent AMD processor

### Supported Input Adapters

Bus	Supported Adapters
PCI	DTA-124, DTA-145, DTA-160
PCI Express	DTA-2142, DTA-2144, DTA-2145, DTA-2152, DTA-2160
USB-2	DTU-225, DTU-245

### Ordering Information

Type	Description
DTC-335-SY	SdEye SDI Waveform Monitor